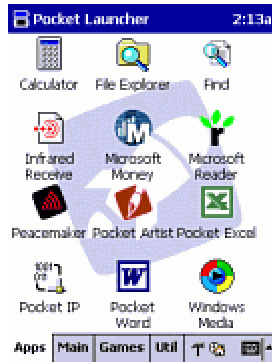


Pocket Launcher Portable Documentation



User Guide

Pocket Launcher is an application launcher where your applications from the Start Menu and the Programs menu are imported into the program. Integration into Start Menu allows Pocket Launcher to activate automatically. You can still activate the built-in Start Menu by pressing the Start Menu button on your Pocket PC.

Integration with the Programs menu means that when the "Programs" item is selected from the Start Menu, Pocket Launcher will activate automatically.

Applications are grouped into tabs that are shown along the bottom of the screen. Tapping a tab brings up the list of applications in that group.

Upon the first launch, Pocket Launcher will import all the applications on your Start menu into the program; over time, it will also check for new applications and will import them. In case it misses something, press Force Update on the Configuration screen to add new items.

Tapping Start->Help will bring up the screen for Help/Configuration.

To change the order of the tabs: click a tab and drag it to the desired position.

To move an application to another tab: Tap and Drag the icon to the tab.

The **hammer icon** will bring up the Tools menu that contains options for Pocket Launcher and individual tabs.

To delete an item: drag onto the hammer icon.

The Options menu can be accessed by selecting Help from the Start Menu.

Pocket Launcher's Options menu features three choices for shell integration.

You can include the 'Find' button or all the items in your Settings on a tab by clicking the appropriate checkboxes on the Tab configuration screen.

If you bind Pocket Launcher to one of your hardware buttons (in the Button Settings screen), tapping it will switch to the next tab.

On devices with a cursor pad: left/right control the active tab; up/down scroll the list of icons.

To reload a deleted item: tap Import Items on the Configuration screen, and a list of all the items available for importing will be presented.

Advanced Usage

Customizing backgrounds is easy -- see the tab's options for where to put the BMP file. To make a bitmap show on all tabs, name it "_default.bmp" and put it in the data directory. Pocket Launcher also supports GIF and JPEG as background types.

Customizing icons is also easy -- With Pocket Launcher tab options, locate the data directory, then with Active Sync, navigate to that directory. To customize an icon in a tab, copy the desired .ICO file into the tab directory, naming it the same as the application. For example, to change the "Contacts" icon on your "Apps" tab, navigate to \Program Files\Conduits Technologies Inc.\Pocket Launcher\data\Apps\ and copy Doom.ico (or whatever icon you have on hand) to "Contacts.ico" into that directory.