


This tutorial shows you how to paint a Van Gogh stylistic painting with your Window Powered or WinCE HPC/PPC device using Pocket Artist by Conduits Technologies, Inc. This tutorial only covers the usage and tools mentioned here and like all artistic things its just one way of using this great piece of software developed by Jason Patterson. All drawing and artwork are © 2000, Jose F. Sosa & JFSdesigns. 

Enjoy and Happy Painting.

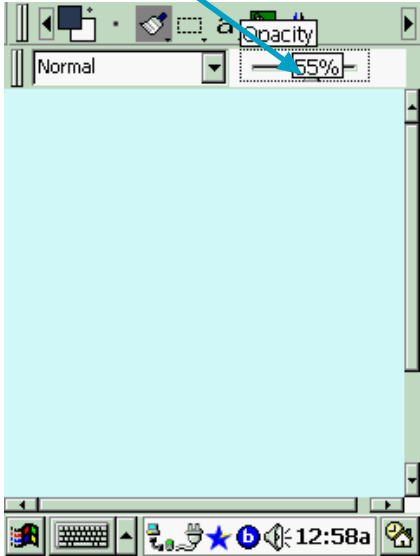
This is the first thing I like to do before I start painting with my PPC device. Start a new picture in the **File/New** and set up the drawing tools, color palettes, brush size and opacity settings you'll need before making stylized brush strokes on your mini screen/canvas.

Tap here to select color.

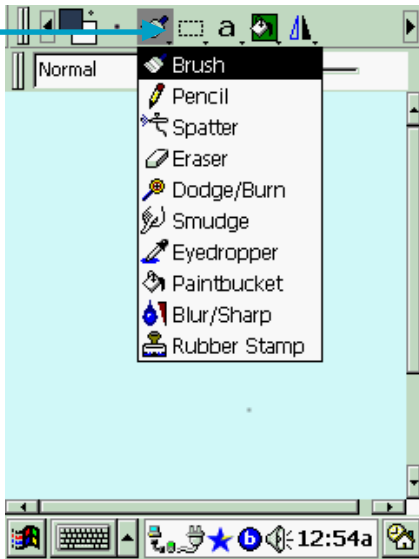
I like to use an Ultramarine dark blue and set the opacity setting to about 50% for the rough outline sketch.



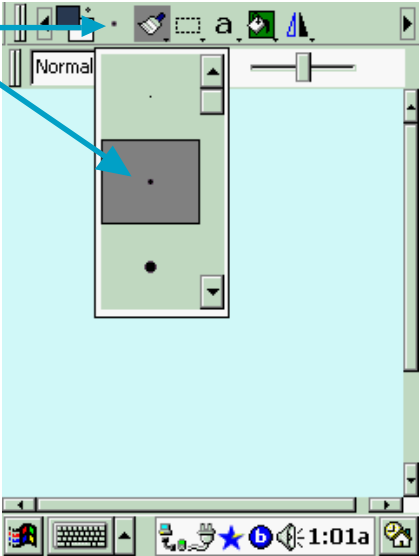
Tap here and move slider bar to change opacity setting.



Select brush tool and size 2 round from the top, now we can begin.



Brush size Selector



Just as in water color or oil painting we want to start out by drawing a rough sketch of our subject matter. Then apply an undercoat or wash of light color to guide us as we paint.

Step 1



With your stylus pen draw out a rough sketch of your subject matter

Step 2



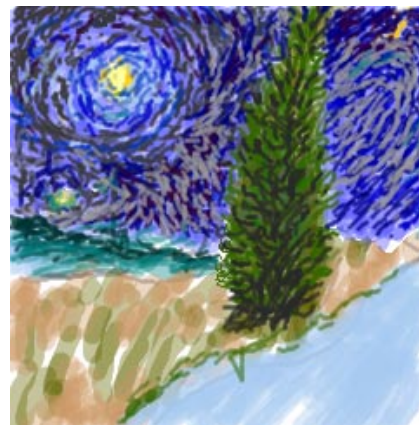
Now select a dark blue at 25% opacity and roughly paint the sky. Do the same with a light green for the tree, light brown & green for the grass, and light blue for the road.

Step 3



Next add little stroke details in the direction or movement of the object your painting. For instance the tree branches out so start with strokes from the center and stroke outward. Use the color opacity setting to vary the strength of color value in your stroke. Value is the color intensity or darkness to lightness of a color. Key importance for this technique to work is the changing of your opacity settings often.

Step 4



Continue adding more stroke detail to the painting and keep in mind that you can zoom in and out on details if you need to. Remember to change the opacity setting of each of the colors your working on, as well as limiting your palette to no more than 4 or 5 colors.

Step 5



Add more details in the sky and a few more trees here and there.

Step 6



Continue to pile on layers of strokes in the sky, foreground and start on the grass blades. Always starting from lighter to darker strokes.

Step 7



Add more details in foreground and the road, we are almost done. By the way this is a little tribute to Vincent Van Gogh's Oil on Canvas "Cypress with two figures" 1890. I left out the figures so we could experiment with the tools and techniques.

Step 8



Here is the finished study with a few highlight strokes on the tree and the use of the smudge tool on the road to add direction. I hope you've enjoyed this tutorial, keep those artistic juices flowing and send any replies or comments on this technique to me at:

josefsosa@email.com